

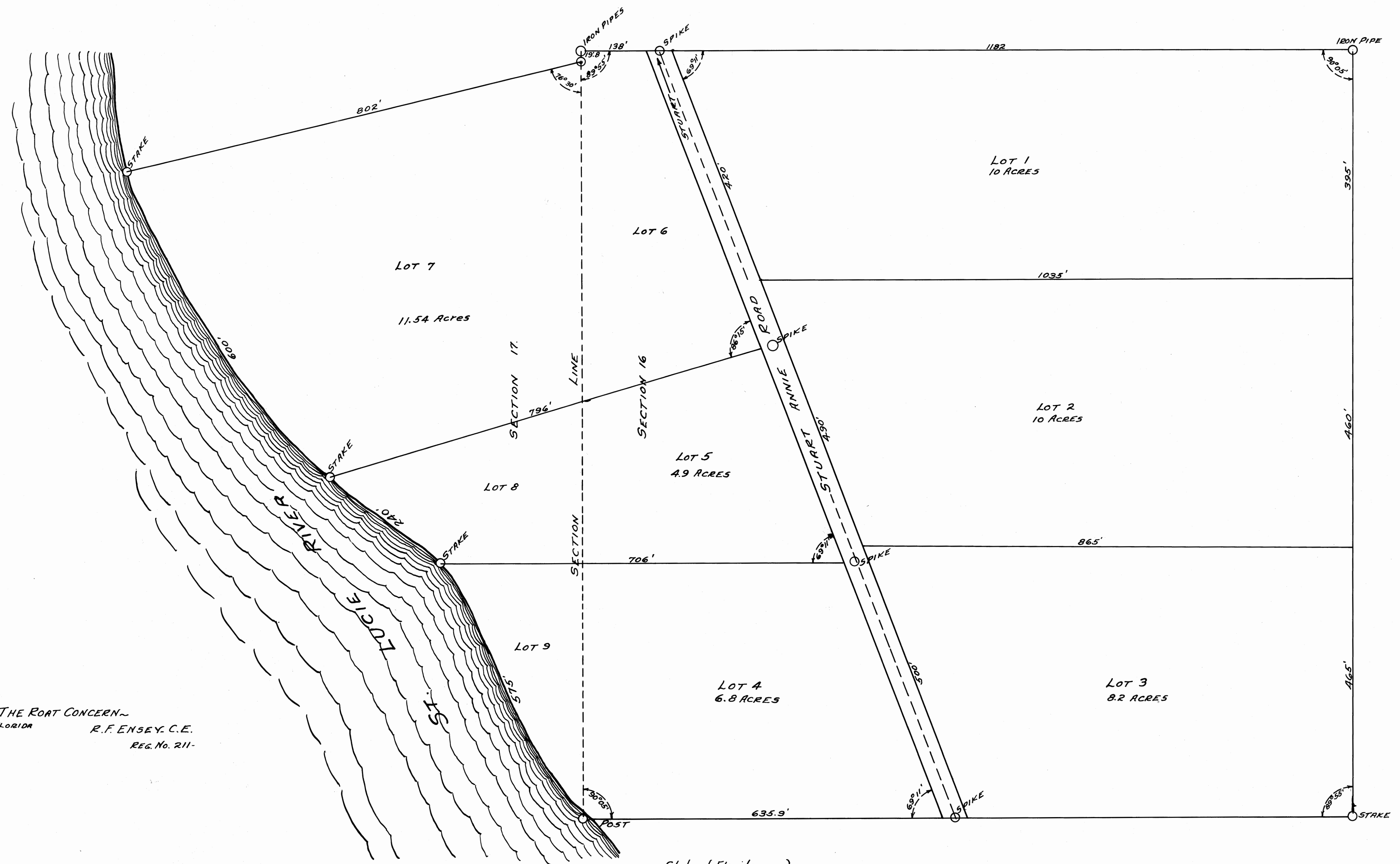
This is a true copy of the original plat of Record of "GLEASONS SUBDIVISION" Plat Book 10, Page 26, Palm Beach County, Florida, Nov. Martin County.

STATE OF FLORIDA }
COUNTY OF PALM BEACH } S.S.
THIS INSTRUMENT WAS FILED FOR RECORD AT 5:00 PM THIS 1 DAY OF MAY 1924 AND DULY RECORDED ON THE 7 DAY OF MAY 1924 IN BOOK 10 OF PLATS ON PAGE 26 RECORD VERIFIED BY Fred C. Jenno CLERK CIRCUIT COURT DEPUTY CLERK

GLEASONS SUBDIVISION

5-1/2 GOV'T. LOT 4, SEC. 16
5-1/2 " " 1, " 17
TP. 38 S. OF R. 41 E.
PALM BEACH COUNTY, FLORIDA.
SCALE 1"=100'

Traced by
STUART BLUE PRINT & DRAFTING SERVICE
Charles H. Clark
UNDER THE SUPERVISION
OF Frank B. Atchell
REGISTERED LAND SURVEYOR
FLORIDA CERTIFICATE No. 443



THE ROBT CONCERN
STUART, FLORIDA
R.F. ENSEY, C.E.
REG. No. 211

State of Florida }
County of Palm Beach } S.S.

I hereby certify that the measurements and angles shown on the above plat are taken from actual data found on the ground by survey under my direction and are true and accurate to the best of my knowledge and belief

Witness my hand and seal on this 28th day of April, A.D. 1924, at Stuart, Florida
Wm H. Root

Subscribed and sworn to before me on this 28th day of April, A.D. 1924
at Stuart, Florida.

Witness my hand and official seal.
Notary Public
My commission expires July 12, 1925

